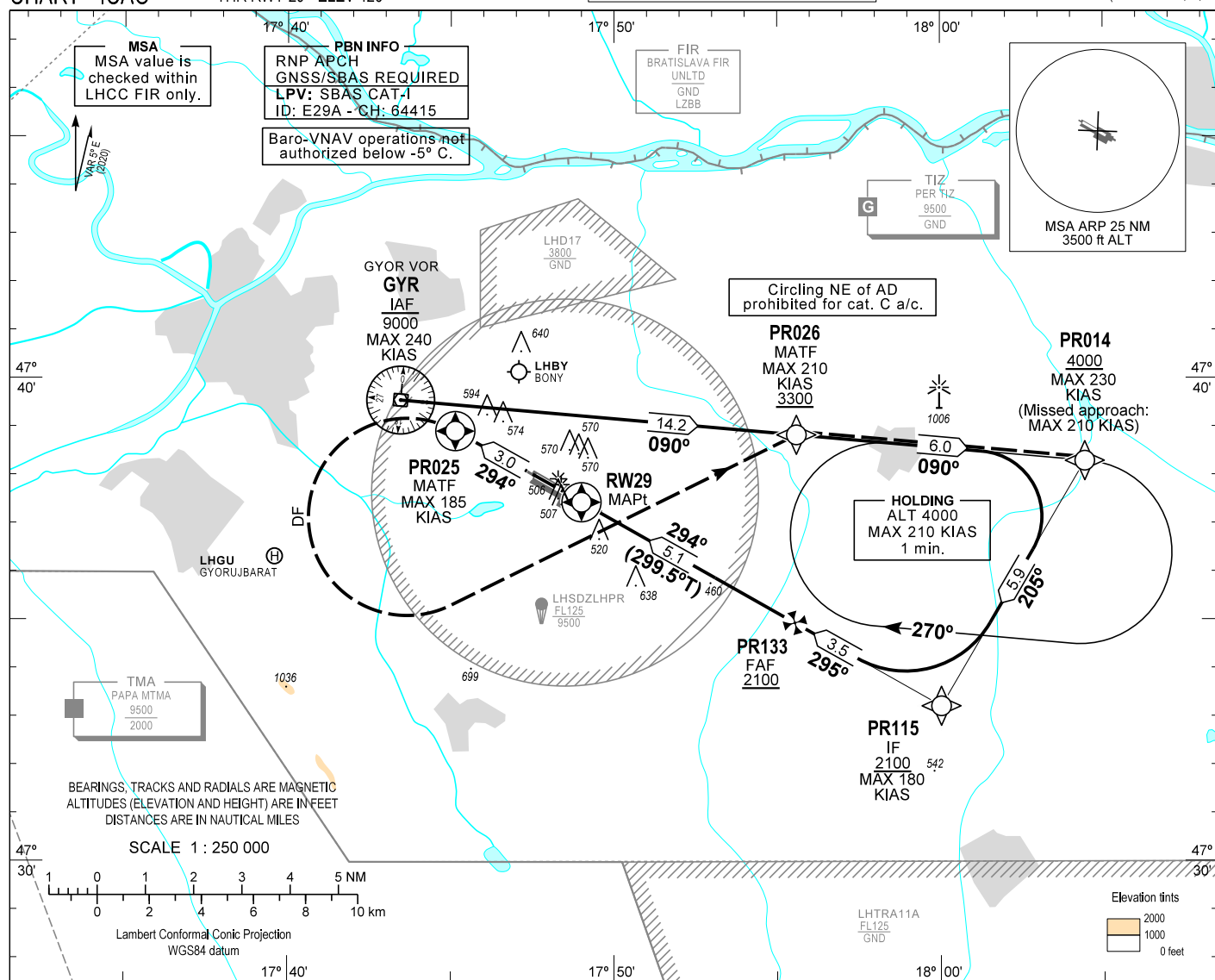


INSTRUMENT
APPROACH
CHART - ICAO

AERODROME ELEV 426
HEIGHTS RELATED TO
THR RWY 29 - ELEV 426

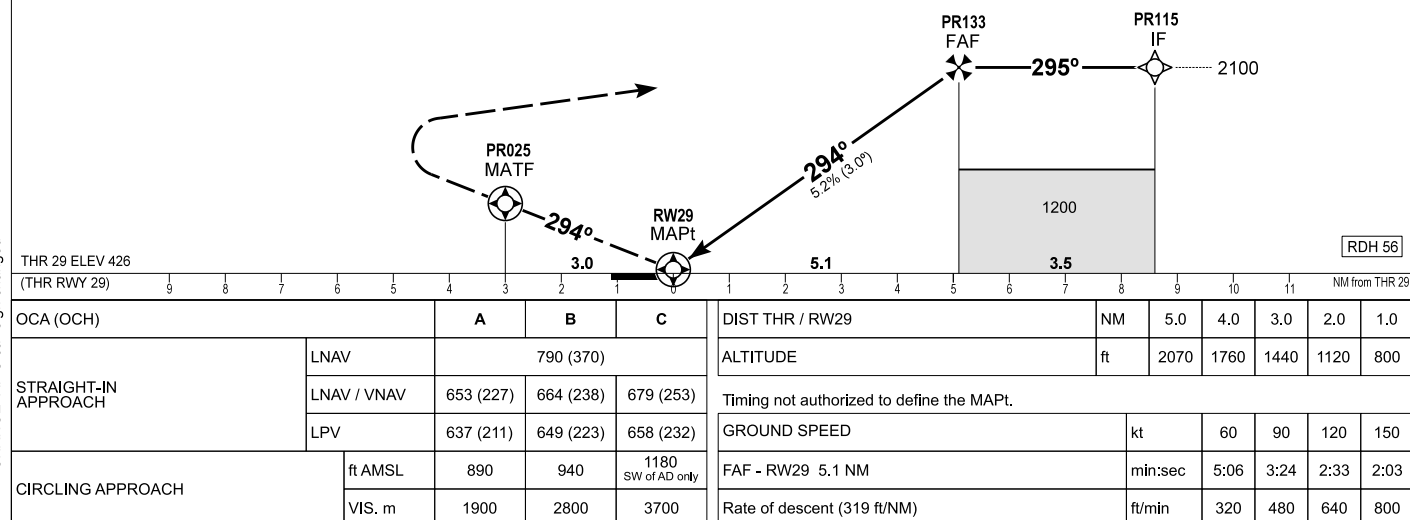
PÉR INFORMATION	129.910
BUDAPEST INFORMATION (WEST)	125.500

GYÖR/PÉR
RNP RWY 29
(ACFT CAT A, B, C)



MISSED APPROACH
Climb to PR025.
Turn left direct to PR026 at or above 3300.
Proceed to PR014, and enter holding at or above 4000.
Maximum turning speed: 185 KIAS at PR025 210 KIAS at PR026.

TRANSITION ALTITUDE
10000



CHANGE: AFIS call slgn changed

AD 2 LHPR INSTRUMENT APPROACH CHART RNP RWY 29

PT	WP ID	Role	OverFly	Bearing/ (Len Dur)	Turn Direction	Altitude (FT)	IAS (KT)	VRT ANG	NAV PERF
IF	GYR	IAF				-9000	-240		RNP APCH
TF	PR014			095.2 T/14.2 NM		+4000	-230		RNP APCH
TF	PR115	IF		210.4 T/5.9 NM		+2100	-180		RNP APCH
TF	PR133	FAF		299.5 T/3.5 NM		+2100			RNP APCH
TF	RW29	MAPt	Y	299.5 T/5.1 NM		+482		-3.0°	RNP APCH
TF	PR025	MATF	Y	299.4 T/3.0 NM			-185		RNP APCH
DF	PR026	MATF			L	+3300	-210		RNP APCH
TF	PR014			095.2 T/6.0 NM	R	+4000	-210		RNP APCH
HM	PR014	MAHF		095.2 T/1 min	R	+4000	-210		RNP APCH

SBAS FAS Data Block Coding Data

FAS-DB (CRC wrapped data)	
Operation type	0
SBAS Provider	1
Airport identifier	LHPR
Runway	29
Approach Performance Designator	0
Route indicator	
Reference Path Data Selector	0
Reference Path Identifier	E29A
LTP/FTP Latitude	473726.0200N
LTP/FTP Longitude	0174900.3000E
LTP/FTP Ellipsoidal Height (m)	174.1
FPAP Latitude	473758.3400N
FPAP Longitude	0174735.6300E
Threshold Crossing Height	17.1
TCH Units Selector	1
Glidepath Angle (degrees)	3.00
Course Width (m)	105
Length Offset (m)	0
HAL (m)	40
VAL (m)	35
Data Block	10 12 10 08 0C 1D 00 00 01 39 32 05 08 1E 70 14 18 68 A5 07 CD 1A 80 FC 00 84 6A FD 56 81 2C 01 64 00 C8 AF 6C 80 8E B4
Calculated CRC Value	6C808EB4
FAS-DB (not CRC wrapped data)	
ICAO Code	LH
LTP/FTP Orthometric Height (m)	129.8

WAYPOINT COORDINATES

WP ID	Latitude	Longitude
GYR	N47 39 32.8	E017 43 27.7
PR014	N47 38 17.4	E018 04 25.7
PR115	N47 33 12.7	E018 00 01.4
PR133	N47 34 56.0	E017 55 32.4
RW29	N47 37 26.0	E017 49 00.3
PR025	N47 38 54.3	E017 45 08.2
PR026	N47 38 49.6	E017 55 35.4

Holding procedure

Holding fix:	PR014
Right hand holding pattern.	
Maximum speed:	210 KIAS
Inbound track:	090°
Outbound track:	270°
Rate of turn:	3°/sec. or 25° bank angle (whichever requires lesser bank)
Outbound times:	1 min.
Minimum holding altitude:	4000
Maximum holding altitude:	8500
Entry:	Sector 1 (parallel) and Sector 2 (offset) entries prohibited